

Port Elizabeth, July 2020

Masifunde's COVID-19 / Lockdown response

Last update: 16 July 2020

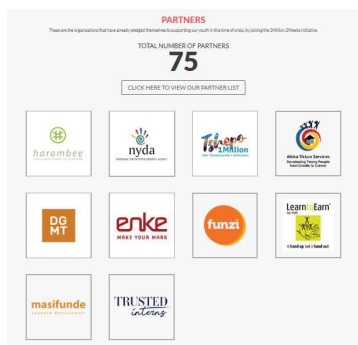
Masifunde's response to the crisis:

- **Awareness and prevention**
- **Programmatic outreach**
- **Families in-need support** in Walmer Township
- **City-wide food-parcel support**



Awareness and Prevention

Already before schools were closed, Masifunde started to raise awareness within the community and via social-media to counteract fake news and to help to prevent unreasonable fears and panic. Learners were briefed on facts and preventative measures. A handout was created and letters to parents were distributed. Currently, Masifunde raises awareness in its weekly tv-show "quaranTV" as well as in the bi-weekly activity newspaper "quaranTIMES"



Masifunde joined the nationwide 3-million-in-3-weeks (www.3m3w.co.za) campaign with organisations such as DG Murray Trust, National Youth Development Agency and harambee. The campaign aims at sharing facts and raising awareness around Corona.

Programmatic Outreach

Our objective is to reach-out to Masifunde's children and youth with the content we would usually deliver during our lessons. Beyond that we try to reach as many learners as possible with positively stimulating content, since there are many of them in challenging domestic situations without any positive stimulation and little or no resources.

quaranTV

quaranTV is our self-produced TV show which brings content from our core programmes to social media and to local TV station Bay TV. Learners can view it with a normal TV aerial in the region or nationwide via DSTV satellite. The show's content is activating and motivates viewers to participate, move and be creative. The episodes feature Drama, Music, Visual Arts, Literacy, Cooking, Health and Fitness, Corona Awareness and prevention of domestic and gender based violence. quaranTV is produced in partnership with Masinyusane and United Through Sport.

quaranTV is aired: Daily, Monday to Friday, at 17h30 for 30min. on Mpuma Kapa, Channel 260 (fka. Bay TV). All shows are available on Masifunde's youTube channel:

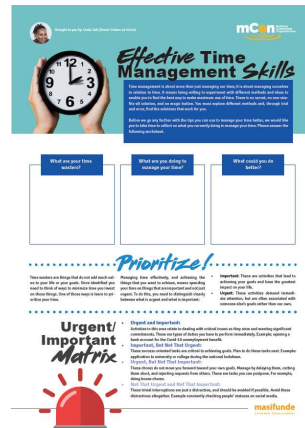
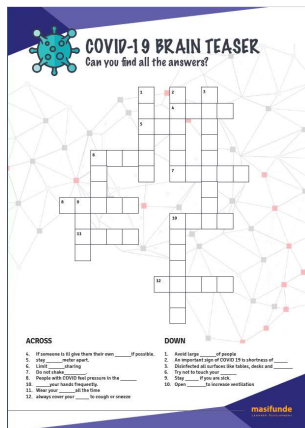
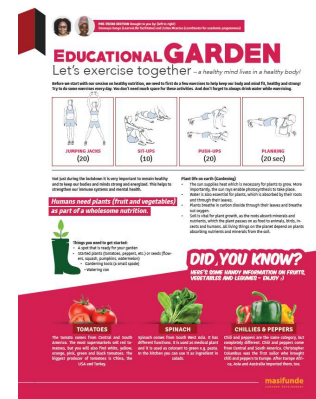
www.youtube.com/masifunde



quaranTimes



quaranTimes is our bi-weekly newspaper which brings activating and relevant content to all age groups. Each sheet of the newspaper (4 pages) is packed with life skills and academic content for one specific age group and works independently on its own: Pre-School, Primary- and High School and Post-School. The newspaper gets developed by Masifunde's programme team, who are currently not able to reach their learners with lessons and group session.



Academic Support

Masifunde's academics team provides copies of study guides and worksheets to especially those learners in crucial grades, such as Grade 7 and Grade 12. All High School learners are part of a facebook group in which they can receive help, information is shared and helpful resources are made available. For the younger age groups, Masifunde provides art material.

New Normal Programmes



Instead of performing our musical “Bhuti is the Beast” on the stage of the National Arts Festival in Makanda, the play was filmed and was presented online in the virtual festival.

Instead of exhibiting our young artists work in our annual arts exhibition, some of their work was printed on to t-shirts as a walking Arts Exhibition.



Instead of performing on the stage of Masi-fudne changemaker Academy, our learners expressed their lockdown experiences in lockdown poems on our facebook page.

Families in-need support in Walmer Township

Our objective is to assist our beneficiaries, their families and as many in-need families as possible through the corona crisis. We assist a case-by-case basis as per individually identified need.

Our assistance includes:

- **psycho-social support** for domestic challenges as a result of the physical lockdown of families in very limited spaces,
- **family support** for those families directly affected by COVID19, e.g. by delivering food-parcels, masks and information material,
- **social assistance** in form of food-parcels or financial assistance for families,

Our process of assistance is based on an early warning system: Our programme team is the first point of contact to all beneficiaries. They remain in touch with the learners from their respective programmes on a weekly basis. Once a specific need has been identified the team member communicates it to the responsible senior social worker.

Masifunde offers crisis relief to families in need. This support programme can be financial assistance, food vouchers or food-parcels.

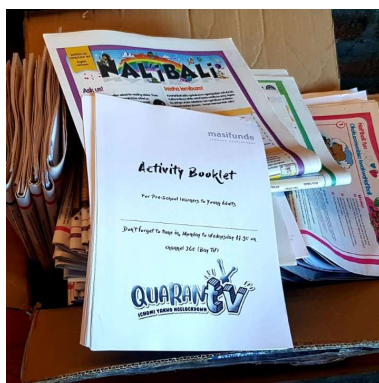
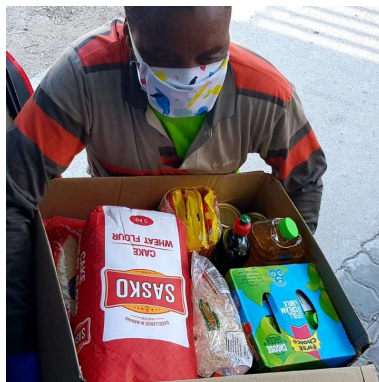
Masifunde currently supports 250 families with food-parcels or food vouchers to the value of in average R 800 per month.

Parcels contain: Groceries, vegetables, face masks, kids' activity packs, art material.

Bi-Weekly Food Parcel Recipients (July 2020)

Pre-School:	10	Out-of school youth	100
Learn4Life:	50	Neighbours	20
Academy of Creativity	50	Community	20

Beyond the 250, we regularly bring food parcels to our partner schools in Walmer Township. So far, we've distributed 1.000 food parcels through John Masiza, Walmer Primary and Walmer High School in Walmer Township.



City Wide Support: PROJECT UNITY



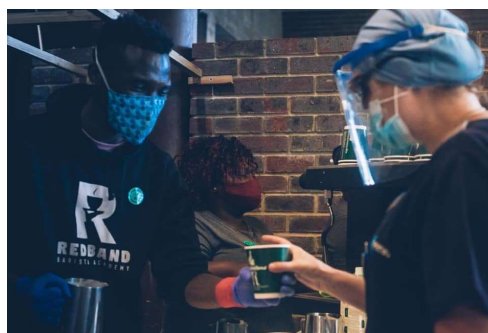
Masifunde has joined forces with United Through Sport and Masinyusane to optimise each other's response to the Covid-19 pandemic in the Nelson Mandela Bay. United Through Sport works with over **80 primary schools in the metropole**; Masinyusane has a decade long relationship with **every township high school**.

We reach out to the most remote primary and high schools in the city which receive the least attention from the local non-profit sector. Schools identify the 5 – 10 % most needy learners & families, and we provide such families with food parcels to the value of +/- R 300.

Together, we have provided 8.250 food parcels to 73 schools reaching approx. 51.000 people

Visit: www.projectunity.co.za

#Coffee4Heroes



In partnership with Red Band Barista Academy, we serve free cappuccinos to frontline workers in Port Elizabeth's hospitals and communities. Father's House Church sells the cappuccinos online and forwards them for free to doctors, nurses, NGO workers, soup kitchens and more. This also allows us to keep our myMiTO cafeteria going and to pay our hospitality team:

<https://forms.gle/cxe22c4ie7rCADtT6>

Contact

For questions, please contact:

Jonas Schumacher

Managing Director

078 646 80 56

Jonas@masifunde.org

Your financial support for any of the above interventions may be directed to:

IN SOUTH AFRICA:		IN GERMANY:	
Account holder	Masifunde	Kontoinhaber:	Masifunde
Account no.	080 266 517	Kontonummer:	160 585 6
Branch Code	050 417	Bankleitzahl:	509 500 68
Bank	Standard Bank	Bank:	Sparkasse Bensheim
Branch	Stanley Street, PE	Verwendungszweck:	Cov19
SWIFT:	SBZAJJ	IBAN:	DE66 5095 0068 0001 6058 56
Please use Cov19 and your name as reference.			